



Steambath Generator
STEAMCORETM

Powerful steam and elegant design - essential elements for unwinding in style. The Steamcore Elegance Series delivers a new soothing dimension in steam bathing and style.

Total impact... from a compact Elegance Series - soothing power, relaxing steam, and all wrapped in a tight compact package with stunning looks. The advanced features of the Steamcore Elegance Series delivers steam quality and steam bathing experience - like nothing you've ever felt.

Elegance Series Features

- #304 Surgical Stainless Steel boiler tank.
- Industrial large diameter low-density incoloy heating elements. (800 series)
- 30 minute automatic backup timer. (or 60 minutes)
- Automatic Rinse and Flush operation. (3 cycles per use)
- Elegance Steam heads with aroma oil reservoir.
- Steam room temperature sensor.
- #304 brush finish stainless steel exterior body.
- Serviceable heating elements.
- Super quiet operation.
- Fresh water after every use.
- 3 level water sensing operation of boiler tank.
- Intelligence Controller (matching Elegance steamhead finishes):
 - Electronic digital control mounted inside or outside Steam Room.
 - Timer and temperature control, with pause feature.
 - Low Voltage.
- State-of-the-art electronic steamer operations circuit board.
- Up to 5-year limited warranty.
- Compact design.
- Minimal water usage for steam.
- Physical size:
 - KWS 2-6 22"L x 10"h x 8"d
 - KWS 7.5-12 23"L x 10"h x 10"d



Intelligence Control



Elegance Steamhead

Control / Steamhead Finishes



Steam Generator Stainless Steel - Exterior Body

Discover your ultimate steam bath - Your quest for a steam generator that matches your style, in every detail, brings you to Steamcore. You'll find all the elements for quality steam bathing.

Now you can enjoy the spa life in your own home, when your mind, body, and spirit demand to be nurtured, pampered, rejuvenated, refreshed, recharged...

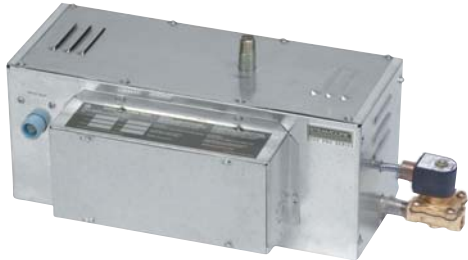
Health Benefits of Steambathing:

- Improves cardiovascular system, breathing and adds a sense of purity.
- Remove impurities from the body through natural perspiration.
- Moistening heat opens and cleans your bodies pores.
- Relieve tired and aching muscles as heat soothes the body.
- Aroma oils will enhance your steambath experience.
- Feel revitalized, rejuvenated and refreshed with a cool shower after steambathing.
- A warm shower will promote a good nights sleep.
- Feelings of relaxation and rejuvenation.

Important Design Considerations

- A steamroom should be constructed of non-porous material, glass block, tile, or natural stone. The door should be sealed and a floor drain should be used.
- The Steamcore generator may be installed in a heated attic, basement, vanity, and up to 30 feet from the shower or steamroom
- All windows part of a steamroom should be double glazed.
- Slope ceiling to direct condensate away from all users. (apr. 2" per foot)
- An anti-slip flooring material should be used on the steamroom floor.
- Built-in seats should be slightly sloped.
- Ceiling of the steamroom should be no higher than 8 feet, anything higher will require a higher power steam generator.
- The steamhead should be located approximately 6 inches away from any corner, 10-12 inches from the floor, and on the opposite wall from the seating area and away from user traffic.
- Visit www.saunacore.com or call us for additional information including sizing, model selection and accessories.
- For more steamroom construction info visit www.tileusa.com (1-800-646-8453)

Steamcore Silver series has all you need for a perfect performance, the unrivaled power and clean soothing steam will make you unwind and relax.



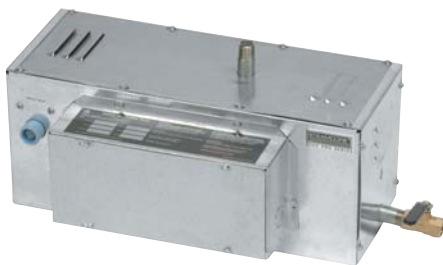
**Electronic ON/OFF
Timer Control
(low voltage)**

**Standard
Steam Head
(aluminum)**

Silver Series

- #304 Stainless Steel boiler tank.
- Galvanized exterior body.
- Automatic Rinse and Flush operation.
- Industrial incoloy heating elements.
- 30-minute automatic backup timer.
- Electronic digital ON/OFF timer control. (low voltage)
- Super quiet operation
- Standard steam heads with aroma oil reservoir.
- Fresh water every time.
- Serviceable heating elements.
- State-of-the-art electronic steamer operation circuit board.
- Up to 5-year limited warranty.
- Compact design.
- Minimal water usage for steam.
- Physical size:
KWS 2-6 22"L x 10"h x 8"d
KWS 7.5-12 23"L x 10"h x 10"d

Put quality in your bathing - offering total relaxation, Steamcore Bronze Series lets you spend quality time relaxing. Submerge in soothing steam, any time you want.



**Mechanical
Timer Control**

**Standard Steam Head
(aluminum)**

Bronze Series

- #304 Stainless Steel boiler tank.
- Galvanized exterior body.
- Industrial incoloy heating elements.
- Serviceable heating elements.
- 30-minute automatic backup timer.
- Manual flush operation.
- Standard steam heads with aroma oil reservoir.
- 30-minute manual mechanical exterior wall timer.
- State-of-the-art electronic steamer operation circuit board.
- Up to 5-year limited warranty.
- Compact design.
- Minimal water usage for steam.
- Super quiet operation.
- Physical size:
KWS 2-6 22"L x 10"h x 8"d
KWS 7.5-12 23"L x 10"h x 10"d

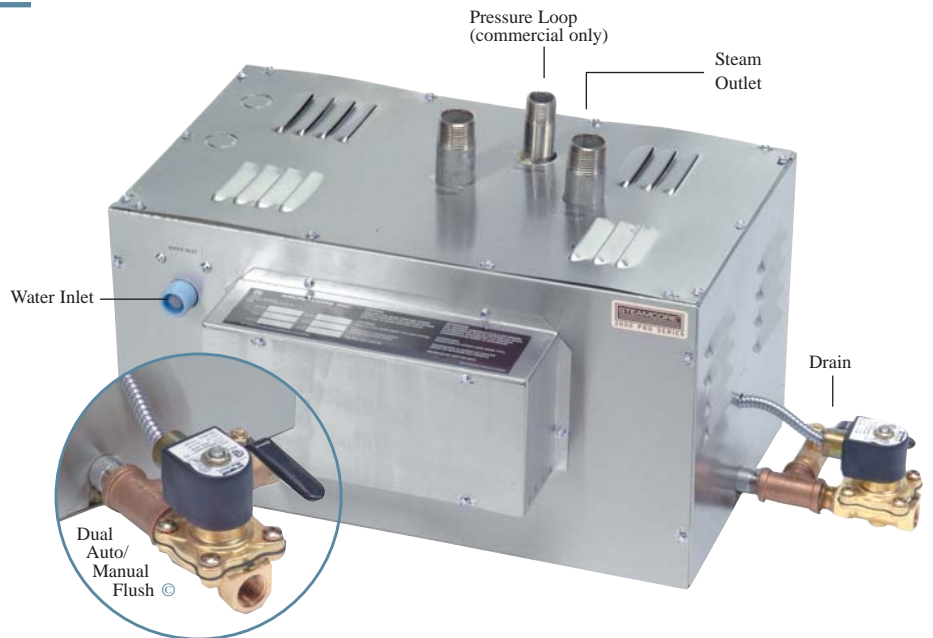
Obsessed with quality... Quality of life.

Steamcore Commercial Generators deliver the kind of power that is at the heart of a soothing, relaxing steambath. This powerful steam generator has the power and capabilities to steam large residential showers right up to commercial steam baths. Steamcore generators are, quiet simply, built tough.

Commercial Unit

- Stainless Steel boiler tank.
- Available in Bronze, Silver or Elegance Series.
- Dual Auto and Manual Flush Valves. (Silver and Elegance Series)
- 'Pressure Relief Loop' system (most reliable safety system).
- Energy efficient (uses minimal amount of water to produce steam due to its compact design).
- Limited 5-year warranty.
- Optional Limited Lifetime Warranty with 'Maintenance Program'.
- Available up to 600 volts - 45000 watts.
- Fresh water after every use.
- 3 level water sensing operation of boiler tank.
- Serviceable heating elements.
- 30/60 minute back up timers
- State-of-the-art operations circuit board.

- Physical size:
KWS 9-18
28"L x 15"h x 15"d
KWS 22.5-45
34"L x 21"h x 22"d



Controls

Mechanical Timer Control

- 30-minute timer
- Room temperature cut-off sensor
- Exterior use

↓ Mechanical



Electronic ON/OFF Control

- 30-minute digital ON/OFF timer control
- Room temperature cut-off sensor
- Low voltage
- Mountable in/out steam room
- 20 ft cable (or more)
- (2 1/2" x 2 1/2")

↓ Electronic ON / OFF Timer Control



Intelligence Control

- Electronic 'push' button thermostat and timer control with pause feature
- Programmable 30 minutes or 1 hour
- Displays the modes that the steamer is functioning at all times during use.
- Function modes: Auto Flush, Power, Steam and Pause
- Available in matching finishes as Elegance steam heads
- Mountable in/out steam room.
- 20 ft cable (or more)
- Room temperature sensor
- Slim and compact size
- (4 1/4" x 5")

↓ Intelligence Control



Steam Heads

Standard

- 1/2" thread aluminum
- silver and gold anodized finish
- Aroma reservoir



Elegance

- 3/4" thread for quiet and more flow of steam.
- Aroma reservoir
- Made of solid Brass
- Finished in:



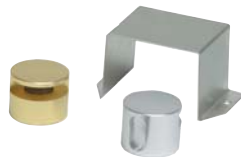
- Brushed Chrome
- Matte Chrome
- Polished Chrome
- Brushed Nickel
- Bright Brass
- Antique Copper
- Oil-Rubbed Bronze
- Antique Brass
- French Gold
- Brushed Bronze

Safety

- As commonly accepted in the medical field for sanitary objectives, Steamcore uses #304 stainless steel boiler tanks to avoid oxidization or corrosion.
- Steamcore has a built-in “High Limit” which prevents the unit from overheating.
- Steamcore units use “Pressure Relief Loops” for the most reliable process of relieving pressure (Commercial Units).
- Steamcore units use three levels of water sensors (stainless steel probes) to prevent the unit from activating the elements without water and to intake minimal water to create steam.
- “Insulmax” by Tritex insulation is used in the steam generator for fireproofing safety.
- All Saunacore products are approved to CSA, UL and CE standards. Best of all, you can be ensured that you’ll receive a product that you can trust and rely on thanks to our high quality and performance.
- Low voltage controls.
- Serviceable heating elements.

Installation Components

- Compression fittings and unions
- Built-in magnetic contactor.
- All steam bath generators have steam heads with aroma oil reservoir.
- Solenoid with a strainer.
- Filtration or softeners are not required for installation.
- Steamcore is functional and durable even in hard water.
- Steamer runs super quiet.
- 30 minutes to 1 hour built-in back-up timers (easy to convert).
- Standard 1/2” thread aluminum heads (silver and gold anodized finish)
- ‘Elegance’ 3/4” thread solid brass steam heads with aroma reservoir.



Durability

- Industrial incoloy 800 series elements used (Bronze & Silver models).
- Elements are more corrosive-resistant than copper and stainless elements.
- Low-density industrial incoloy 800 series elements are used (Elegance models).-Long Life
- “Insulmax” by Tritex Insulation is used to insulate the boiler tank, making the machine more efficient and, in turn, keeping the exterior body of the unit cool to touch.
- An “Auto Flush” and “Auto Rinse” are located at the lower side of the tanks in order to clean it from build up of limestone and calcium (to ensure this, it has three flush and three rinse cycles per use.– Silver & Elegance models)- fresh water, clean steam every time.
- Flexible metal tubing is used to protect the wires of the steamer tank.
- Tank divider and boiler tank is made with #304 Stainless Steel.
- The exterior body is galvanized for rust proof or #304 stainless steel (on Elegance Model).
- All element connections are with stainless steel bars.
- Boiler is tick-welded to prevent any kind of leaks.
- The exterior body is built with louvers for air circulation.
- Filling/Drain solenoid valve has been tested for 10 million functions capability.
- Offers multiple choices of water connection: 3/4-inch, 1/2-inch or 1/4-inch.
- Modular “snap-in” connections.
- Full port drain valve.
- Electronic 3 level water control system.

Easy On-Site Service

- Steamcore units make it easy to test any components.
- Our silver sauder elements are bolted into the tanks, making them easy to service.
- All components can be serviced or tested on-site.
- Limited lifetime warranty on boiler tank.

Finishes: Brushed Chrome, Matte Chrome, Polished Chrome, Brushed Nickel, Bright Brass, Antique Copper, Oil-Rubbed Bronze, French Gold, Brushed Bronze, Antique Brass, and Polished Nickel

Locating the Steamcore Steam Generator Unit

1. Plan the location for mounting your steam generator.
2. Do not install generator inside steam room.
3. Do not install generator outdoors.
4. Do not install generator near combustible or corrosive materials or chemicals.
5. Place the generator in a dry and easy accessible location for future periodic maintenance. Locate steambath generator preferably within 25 feet of the steam room, though it may be placed up to 50 feet away.
6. A gravity drain will be necessary for all units.
7. Never locate a unit that may be exposed to frost, fire, or high moisture. Do not install steambath generator in unheated attic or basement where water could freeze.
8. The unit must be located on a solid and flat level surface.
9. Install generator in an upright position only.
10. Steam line, and drain valve become hot during operation. Provide appropriate protection.
11. Intelligence Control and Electronic ON/OFF Control can be located inside the steam room or outside of the steam room. See separate control installation and operation instruction for specific details. Mechanical controls are located outside the steamroom, a remote sensor is required for all controls
12. Install anti-water hammer device if required.
13. Provide access to the steambath generator for servicing.
14. **For steam room design and construction visit http://www.tileusa.com/steamroom_faq.htm**

Steam Bath Generator (Sizing and Selection)

Measure the length, width and height (in feet) of the steam shower. Multiply the three measurements together to get the basic volume in cubic feet.

$$L \times W \times H = \text{CUBIC FEET} \times \% \text{ (wall finish)}$$

Add the cubic footage to one of the wall finishes

Ceramic Tile	25%
Natural Stone	100%
Fiber Glass/Acrylic	0%
Steam Line 50ft+	20%
Glass Block Wall	10%
Steam Line Subject to Freezing	25%
Glass Wall	10%

Example:

A ceramic steam shower with the dimensions 7ft length by 5ft wide and 7ft high (7ft x 5ft x 7ft =245), is 245 Cubic feet.

Since the steam shower has ceramic wall finishes, it then requires a 25% cubic footage increase.

$$(\text{Ceramic tile}) 25\% \times (\text{steam shower}) 245 = 61.25 \text{ ft}$$

The wall finish cubic feet is then added to the original dimensions to calculate the total cubic footage, which in this case is 306.25 ft.
(ceramic tile) 61.25 + (steam shower) 245 = 306.25 ft

Now select the next size of Steamcore model generator which exceeds the calculated room cubic feet. This case the KWS (9000 watts) generator is required. If there is doubt in size, it is recommended to choose the next larger size.

Residential Model #	Watts	Recommended Max. C.U.Ft.	Volts / ph / AMPS	Steam Line	Size of Line	1/2" Standard Steam Head	3/4" Elegance Steam Head
KWS 2	2000	30	120V / 1 / 16.8 240V / 1 / 8.4	1	1/2"	1	1
KWS 3	3000	50	240V / 1 / 12.5	1	1/2"	1	1
KWS 4.5	4500	65	240V / 1 / 18.75	1	1/2"	1	1
KWS 6	6000	175	240V / 1 / 25.0	1	1/2"	1	1
KWS 7.5	7500	250	240V / 1 / 31.3	1	1/2"	1	1
KWS 9	9000	375	240V / 1 / 37.5	1	1"	2	1
KWS 10.5	10500	450	240V / 1 / 43.8	1	1"	2	1
KWS 12	12000	525	240V / 1 / 50.0	1	1"	2	1

Commercial Model #	Watts	Recommended Max. C.U.Ft.	Volts / ph / AMPS	Steam Line	Size of Line	1/2" Standard Steam Head	3/4" Elegance Steam Head
KWS 9	9000	375	240V / 1 / 37.5 208V / 1 / 43.3 208V / 3 / 24.0 450V / 3 / 11.6 575V / 3 / 9.1	2	1"	4	2
KWS 10.5	10500	450	240V / 1 / 43.8 208V / 1 / 50.5 208V / 3 / 29.2 450V / 3 / 13.5 575V / 3 / 10.6	2	1"	4	2
KWS 12	12000	525	240V / 1 / 50.0 208V / 1 / 57.7 208V / 3 / 33.4 450V / 3 / 15.4 575V / 3 / 10.6	2	1"	4	2
KWS 13.5	13500	625	240V / 1 / 56.3 208V / 1 / 64.9 208V / 3 / 37.5 450V / 3 / 17.3 575V / 3 / 13.6	2	1"	4	2
KWS 15	15000	685	208V / 3 / 41.7 450V / 3 / 17.3 575V / 3 / 13.6	2	1"	4	2
KWS 18	18000	750	208V / 3 / 50.0 450V / 3 / 19.3 575V / 3 / 15.1	2	1"	4	2
KWS 22.5	22500	925	208V / 3 / 62.5 450V / 3 / 28.9 575V / 3 / 22.6	3	1"	6	3
KWS 27	27000	1125	208V / 3 / 75.0 450V / 3 / 34.7 575V / 3 / 27.1	3	1"	6	3
KWS 31.5	31500	1275	208V / 3 / 87.5 450V / 3 / 40.5 575V / 3 / 31.7	4	1"	8	4
KWS 36	36000	1400	208V / 3 / 100.0 450V / 3 / 46.2 575V / 3 / 36.2	4	1"	8	4
KWS 45	45000	1800	208V / 3 / 125.1 450V / 3 / 57.8 575V / 3 / 45.5	4	1"	8	4



Aroma Therapy Pure Oils Available

- Eucalyptus
- Lavendar
- Relaxation Blend
- Sensuality Blend
- Stress Relief Blend
- Call for accessories.

Commercial units available up to 600 volts.

For warranty details see warranty card. All steamers meet Canadian, USA & European safety standards. Saunacore reserves the right to change, alter or discontinue models. Items and colors may not be exactly as shown. Sizes are approximate. Not liable for any misprint. Consult with physician before use.

Steam generators over 40 amps may require more than one dedicated main power supply. Call for details.

Commercial units are available in Bronze, Silver and Elegance packages